

ParishStaq Giving, How to Sign-in to LEAD App, & Fees

How can we use the ParishStaq Giving Portal?



ParishStaq's Giving Portal is one part of a suite of online tools that is more than a donor database. This module of ParishStaq can track donations across all platforms (offline, online, and cash gifts) and feed it into the appropriate Profiles/Groups/Events in the ChMS. This Giving Portal is also where you can configure your Pushpay Online Giving page.

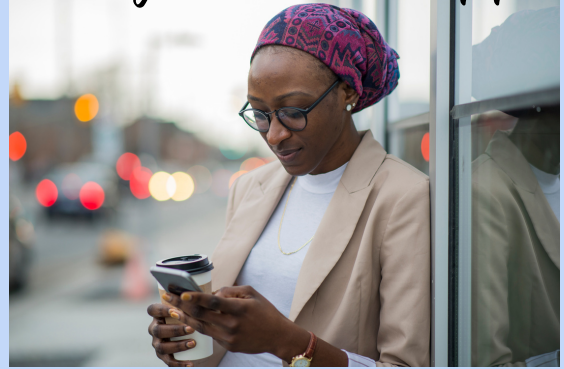
Some of you have already started to use the Giving Portal to post envelope and cash donations. Others have activated their Pushpay Online Giving. As of June 10, we have over \$8 million in recurring gift schedules setup for all sites using Pushpay Giving.

If you are currently working with a Pushpay coach, please take advantage of their knowledge of best practices to launch Online Giving while your campus is in implementation. The integration of the Giving module with the ChMS database and App will allow pastoral leadership and staff to facilitate deeper engagement in parish life by making the accounting/bookkeeping work a breeze!

Celebrations

We congratulate **Wave 7.5** for having moved onto Phase 2 of their ParishStaq journey. They will now be working with their coaches to progress more rapidly as they continue to learn and grow in their software implementation and deployment.

Using the LEAD App



How to login to the LEAD App

- Sign-in to your user account in ChMS.
- Search for the LEAD App in the app store for your smartphone.
- Click on "Enter Subdomain" (located on the bottom of the screen).
- Type "archseattle".
- Now login as you would ChMS. Have your authenticator ready for the Multi-Factor Authentication (MFA).

Contact parishstaq.support@seattlearch.org if you have any questions.

ParishStaq Giving Fee Schedule*

Transaction Type	Parish Cost
ACH	.50% + \$.25
Debit	1.55% + \$.25
Credit	2.55% + \$.25
American Express	2.55% + \$.25

*Fee schedule is based on negotiated rates as published in the February 2023 Pushpay/ParishStaq FAQs.